

IMPORTANT SAFETY INSTRUCTIONS

When using an electrical furnishing, basic precautions should always be followed, including the following:

- ⚠ WARNING:** To reduce the risk of burns, fire, electric shock or injury to persons. Use this furnishing only for its intended use as described in these instructions. Do not use attachments not recommended by the manufacturer. Never drop or insert any object into any opening. Do not use outdoors.
- ⚠ WARNING:** Risk of electric shock. Connect this furnishing to a properly grounded circuit only. See grounding instructions.
- ⚠ CAUTION:** Maximum shelf load 34lbs/15.4kg

ELECTRIC CONNECTIONS

ALL WIRING SHOULD BE DONE BY A QUALIFIED LICENCED ELECTRICIAN.

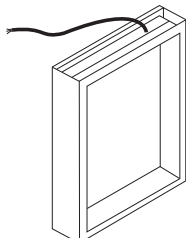
- ⚠ WARNING:** Shut off power before wiring the cabinet.

Requires 120 VAC 20 Amp GFI protected Circuit.

GROUNDING INSTRUCTIONS:

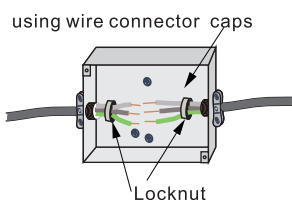
- ⚠ CAUTION:** This product must be connected to a grounded metal permanent wiring system or an equipment-grounding conductor must be run with the circuit conductors and connected to the equipment grounding terminal or lead on the product.
- ⚠ WARNING:** An Electrical option cabinet must be wired to a 20 Amp GFI (Ground Fault Interrupter) protected circuit when used in bathrooms and all other locations required by the National Electric Code.

The electric wire comes through the access hole on the top of the cabinet, exact location of access hole varies depending on the product models. Please refer to the actual product for the exact location.

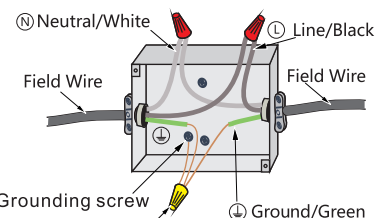


Make connection with Junction box

Neutral to white.
Line to black.
Ground to green.



★ junction box is not included ★

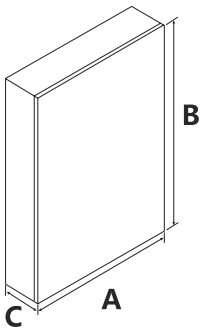


wire connector caps
★ (not included) ★

HARDWARE AND TOOLS

Hardware				Tools (not included)		
NO.		Draw	QTY(pcs)			
A	Top mounting bracket		3-5			
B	Bottom mounting bracket		1			
C	Hardware screw		5-12			
D	Glass side panel		2			
E	Glass Shelf		3			
F	Shelf support bracket		6			
H	Wall Plug		5-12			

DIMENSIONS



A-Cabinet's Width
B-Cabinet's Height
C-Cabinet's Depth

NOTE: Determine overall medicine cabinet dimensions. If for recess mounting medicine cabinet, determine rough-in (Wall Cut-out) dimensions.

NOTE: All rough-in dimensions for reference only!

Model Number		Item	A	B	C	Rough in size
Rory	20" LEFT (MCL2 2032L)	20" RIGHT (MCL2 2032R)	20"	32"	5-1/4"	19-1/2"x31-1/4"x4"
	24" LEFT (MCL2 2432L)	24" RIGHT (MCL2 2432R)	24"	32"	5-1/4"	23-1/2"x31-1/4"x4"
	30" REVERSIBLE (MCL2 3032)	/	30"	32"	5-1/4"	29-1/2"x31-1/4"x4"
	36" REVERSIBLE (MCL2 3632)	/	36"	32"	5-1/4"	35-1/2"x31-1/4"x4"
	48" REVERSIBLE (MCL2 4832)	/	48"	32"	5-1/4"	47-1/2"x31-1/4"x4"

PRIOR TO MOUNTING

★ Remove the Door(s) prior to mounting your Cabinet(s) ★

1

⚠ For recess mount only!

Carefully remove side mirror panels for recess mount installation.

3

While supporting the door release (the lever under the hinge arm), slide the door off the frame.

2

Remove door(s) prior to mounting your cabinet. Start with unplugging the door from the cabinet.

4

Take off the door(s) carefully and lay it down on a safe area.

RECESS MOUNT INSTALLATION CONTINUED

1

Draw the perimeter of the cabinet on the wall.

2

Cut the marked perimeter with suitable tool.

3

Frame the opening for the cabinet based on the measurements.

4

Connect electrical wires before inserting the cabinet into the opening.

5

Be careful to avoid squeezing the wiring while insert the cabinet.

Position cabinet in cut out opening.

6

Affix using hardware screws into the studs.

SURFACE MOUNT INSTALLATION

1

Level and mark the cabinet's location on the wall.

2

Attach bottom bracket to wall.

Bottom mounting brackets must be attached to furring strip/channel or wall studs

3

Connect the wire to Junction Box inside the wall.

4

With assistance, to rest the cabinet on the mounting bracket and hold in place.

5

Insert top mounting bracket into the top of the cabinet.

6

Make sure top brackets are locked in the grooves.

7

Top mounting brackets must be attached to furring strip/channel or wall studs.

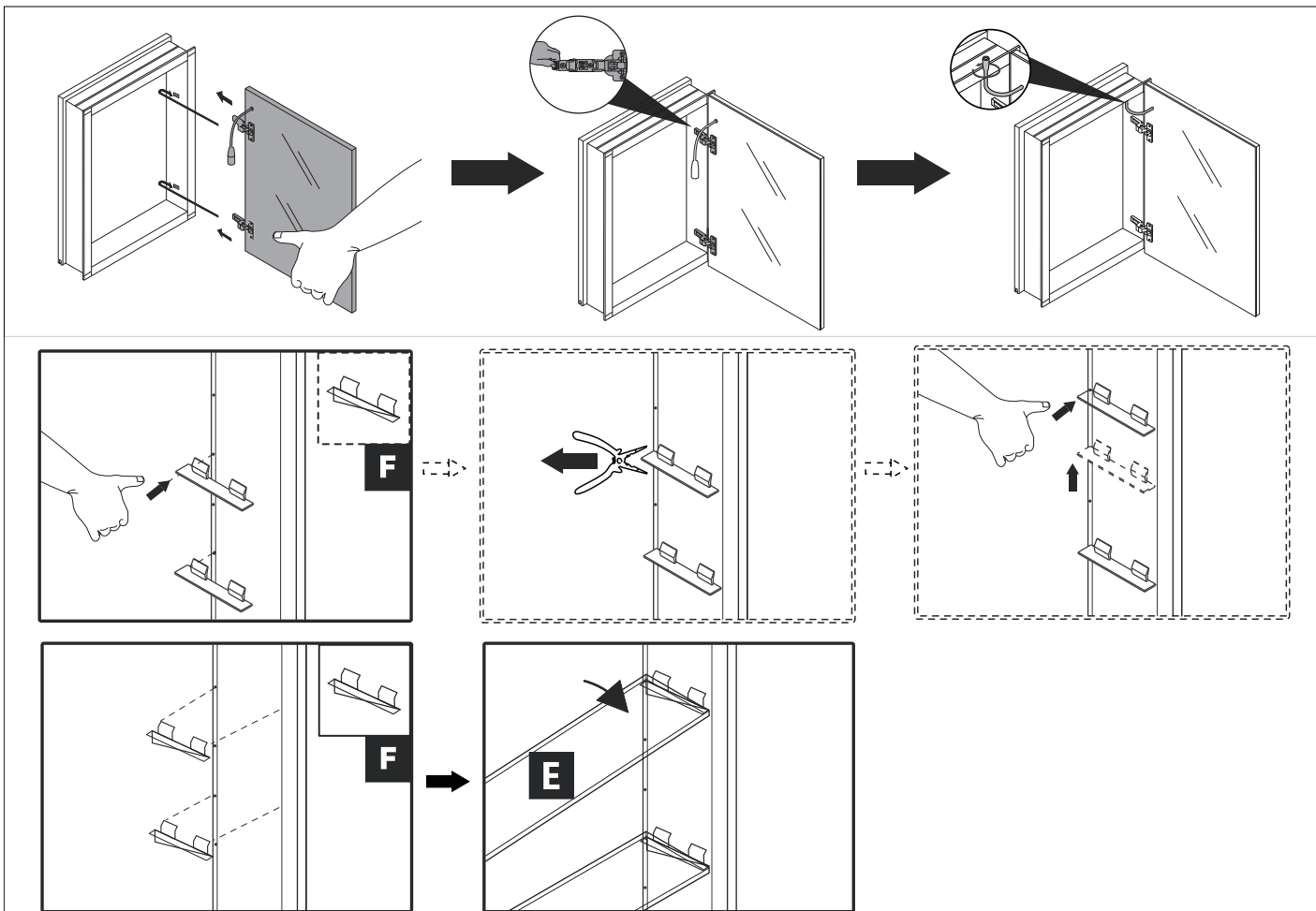
Attach the top mounting bracket to the wall using a screw gun.

8

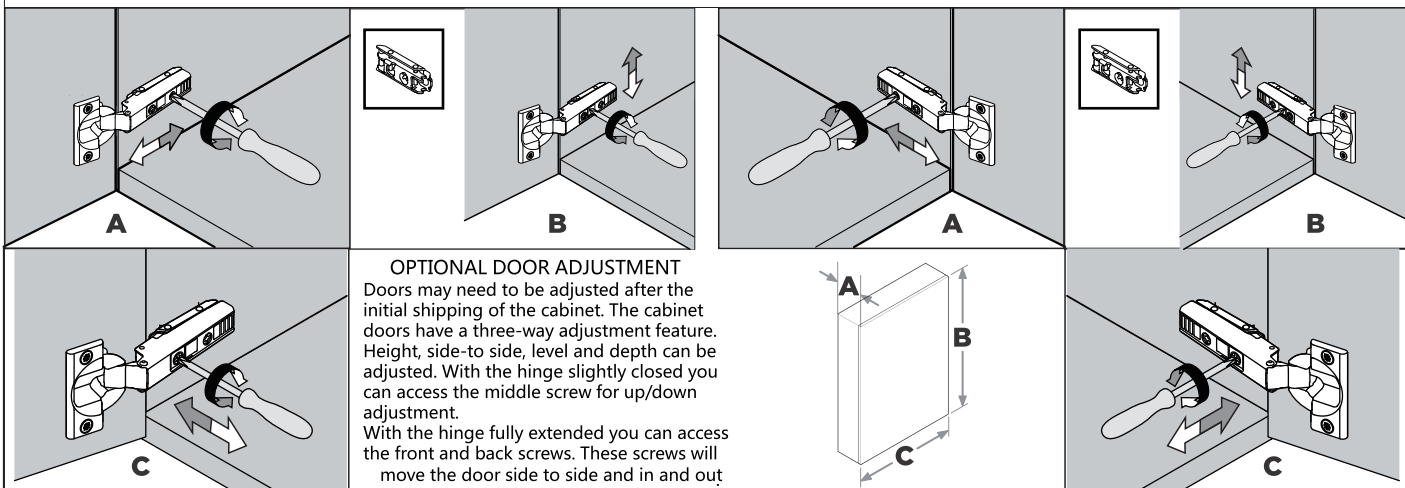
Make sure cabinet is leveled and fully inserted into the groove of the bottom bracket.

Test the fit of the cabinet before Final assembly.

FINAL ASSEMBLY




1. Insert clear snap in shelf clips (F) into holes on the sides of the cabinet.



Button Control & Digital Display Setting Up


Button Functionality for Defogger, Light & Dimmer:

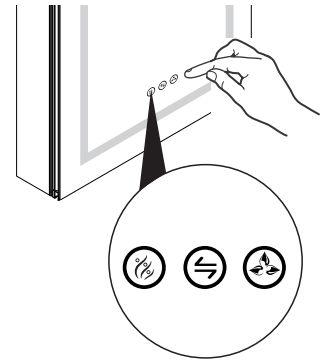
LIGHT: touch  key to turn on/off lighting function.

Hold  key to dim or brighten the light.




LIGHT: tap  key to rapidly switch color temperature of the light.

Hold  key to gradually switch the color of the light.

DEFOGGER: touch  key to turn on/off defogging function.




Turn Off Lighting of Buttons

Touch  key to turn off lighting function. Hold the key to turn off the lighting for button  .

Touch  key to turn off the defogger, hold the key to turn off the lighting.

Set Up Digital Clock & Temperature Display Enter Programming Mode

Hold  key more than two seconds and enter setup mode. Clock will cycle digits for 12/24, hours, minutes, C° / F° with 3 second intervals.

Hold  key time **12H/24H** will start to flicker, tap your selection.

Hold  key will move you to next step **HOURS**, tap your selection.

Hold  key will move you to next step **MINUTES**, tap your selection.

Hold  key will move you to next step **C° / F°**, tap your selection.

After finishing setting up, just leave the key untouched, it will exit programming mode automatically.

