

IRREGULAR TILE

Irregular Faced Tile

What are Irregular faced tiles? For this conversation, we are referring to tiles that may hold materials on the face especially when grouting. This can be a tile with a natural cleft or be created with ridges or flutes. This is also pertinent to some mosaics that have different thickness and size stones. To a client that has grouted before they can be intimidating, conversely an installation could be ruined by someone that does not know the possible issues. If grout gets embedded and dries on the face of the tile it can be nearly impossible to remove.



EXAMPLES

The materials shown on the left have common trouble areas that can hold grout. No matter how the tile or stone is made, grout is created to bond to it. The grout does not care if it bonds to the joint or the face. Using proper techniques, grout is easily squeegeed off a flat face tile. When the tile face is not flat the grout can get stuck in the irregularities. If it dries there it can be almost impossible to remove.

Step 1:

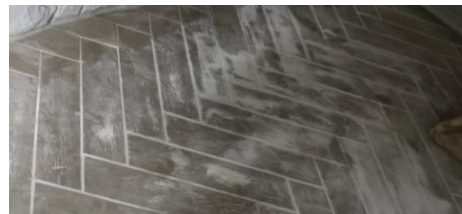
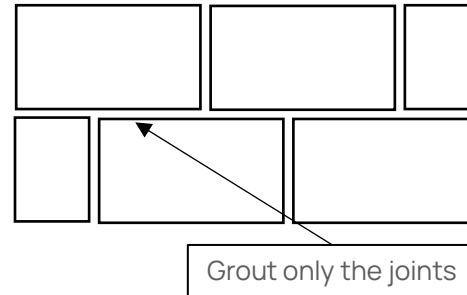
- **TRY TO GROUT ONLY THE JOINTS**, unless you have a mosaic
- Consider a grout release or Presealing the tile
- On a large tile painter's tape can mask the tile and simplify cleanup.

Step 2:

- **CLEAN THE FACE AS YOU GO**
 - With your finger or the edges of the sponge immediately clean those irregular surfaces
 - Be careful not to remove grout from your joints

Step 3:

- **FROM HERE FOLLOW NORMAL GROUTING PROCEDURE AND INSTRUCTIONS**

**TEXTURED STONE**

A stone tile with a matte or textured face is a great candidate for Preseal or Grout release.

ANOTHER UNIQUE OPTION

Use a piping grout bag to install. This works for tiles with large grout joints and places the grout directly in the joint. Still cleaning as you go if you get grout on the face of the tile.

A WARNING

DON'T END UP LIKE THIS PROJECT, ALL THE TILE HERE WILL HAVE TO BE REMOVED.



[See a step-by-step video here](#)