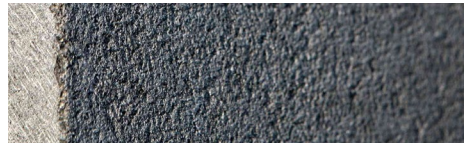


# GROUT RELEASE

**Question: Does your project need Grout Release?**

What are the basics of grout release? If you have a tile material that may be hard to clean you can use a grout release before grouting. This can help the grout material not bond to the surface of the tile or stone. It is helpful on textured and porous materials. Brick and flamed stone materials are a couple of the culprits. This simple process could save your project a lot of time and headache.

Clay tiles, stone and some porcelain/ceramic finishes can benefit from the use of grout release. If the material being installed could be stained or it has an irregular surface, then grout release can make the installers work significantly easier. Grout release is easy to install and should not change the finish of the material. Always follow the instructions and do a test area in an inconspicuous area. If you are using on a porcelain or ceramic tile beware that you do not let the material pool. *READ ALL INSTRUCTIONS ON THE MATERIALS CHOSEN.*



**TERMS TO KNOW**

**Grout Release** – A removable water-soluble surface coating that is used to protect tile or stone from staining when using grout.

**Stone finishes that may need Grout Release**

← **Flamed (Thermal) Finish** – Plane surface with a flame at high temperature creates a rough surface.

← **Sandblasted** – Coarse plane surface produced by blasting an abrasive.

← **Bush-hammered** –Coarsely textured surface by hammering and can be adjusted on how coarse depending on the hammer chosen.

← **Natural Cleft** –A cleavage face formed when stone is split into any thickness. This ridge can be thin or thick.

## Start the Conversation

### Customer is purchasing stone tiles:

**TB:** "Would you like to add a grout release to your order?"

**Client:** "Do I need that?"

**TB:** "For this material it will be helpful with the grout clean up. Stone is naturally porous, and the grout can be difficult to remove from the face of the material. You notice it especially when there is a contrasting grout color."

### Customer is purchasing textured porcelain or ceramic tile:

**TB:** "May we add grout release to your order?"

**Client:** "Do I need that?"

**TB:** "Porcelain will not absorb the grout, but because of the texture grout release may make it easier to clean."

**Client:** "Ok, add it."

**TB:** "Great. When installing be mindful of the coverage and do not let the material pool. Clean off any excess."

### Customer is purchasing polished, gloss, or matte porcelain or ceramic tile:

**Client:** "Do I need grout release?"

**TB:** "Porcelain will not absorb the grout and this finish should not hold your grout. I do not believe that you will gain anything by adding this material."

## PRODUCT QUICK DATA

### Laticrete Stonetech Grout Release –

- 1 gallon unit (1,700sf/unit) depending on porosity
- Apply 4 hours prior to grouting
- Install with paint pad, paintbrush, paint roller or low-pressure sprayer
- Do NOT let material pool.
- Do not allow grout to completely dry.
- Mask off any areas that you do not wish to cover.

### Ideal Materials –

- Marble
- Limestone
- Travertine
- Slate
- Sandstone
- Tumbled Stone
- Masonry
- Concrete