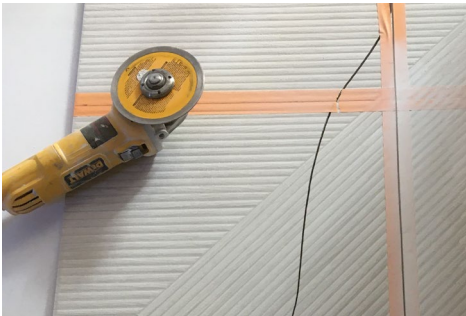
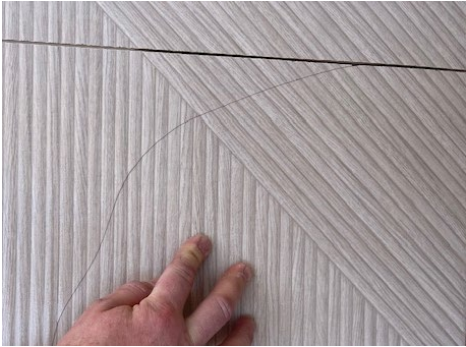


CUTTING

LARGE-FORMAT

The concern?

Large Tiles. When cutting, the tile it is sprawling or breaking before the cut can be completed.



Handheld Grinder

Step 1: Preparation

- Tape and mark the tile
- Place tile on ridged insulation and on a solid surface (this protects the tile from vibration)

Step 2: Score the Tile First

- Do not try to cut all the way through the first pass.
- **Be Patient.**

Step 3: Slowly cut using a back-and-forth motion, taking off a layer at a time.

- There is less tension on the tile to cut from the top down.

Table Wet Saw

Using normal cutting procedures, I was able to cut without incident. You can use similar protection procedures as noted in the HANDHELD GRINDER.

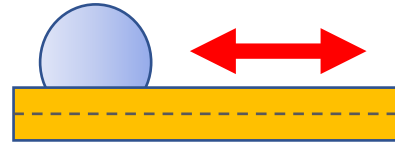
- Insulation
- Tape
- Score first
- **Patience**

Table Wet Saw

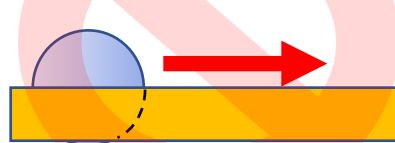
Cutting a hole was accomplished without incident. This tile was easy to cut through using to following tips.

- A good diamond core bit
- Keep the bit cool
- Using a variable speed drill
- Alternating pressure
- Patience

USING A BACK-AND-FORTH MOTION
IS LESS FORCE ON THE TILE



USING A FORWARD ONLY MOTION
APPLIES A LOT OF FORCE ON THE TILE



Conclusion

I only experienced minor difficulty cutting this tile. The difficulty was on the table saw and because the saw I had did not have a large enough table to support the entire tile. At the end of my cut, the weight of the tile hanging over put too much stress at the cut line. This caused the tile to crack in the last 1.5". (See pic)

All large tiles require extra effort, because of the size and the weight, but acceptable results can be achieved. I could not reproduce the outstanding claims when using the correct cutting procedures. When I took the time to prepare the cuts with proper support, tape, insulation and cut slowly I achieved the results needed.



BECAUSE THE TILE WAS CANTALEVERED OFF THE RIGHT SIDE OF THE SAWS TABLE IT CREATED TENSION AT THE BLADE. THIS CAUSED A FAILURE AND THE END OF THE CUT.

TIPS

- Use good equipment
- New blades
- Appropriate size saw
- Use an insulator to reduce the vibrations.
- Score the tile before trying to cut through on the first pass
- **Be Patient** – cut slowly