

# CUTTING GLASS TILE

## Cutting Glass Tile

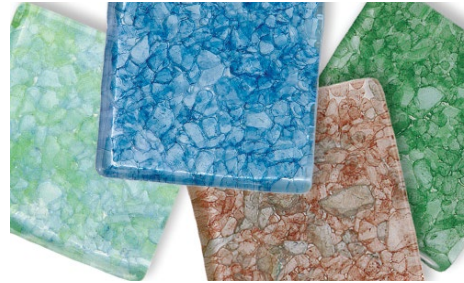
Cutting glass tile can be tricky and expensive if you don't know what you're doing. Glass tile is more expensive than other types of tile, so it is important to avoid wasting it by making bad cuts.

There are a few different types of glass tile, but all require special care when cutting. If you are not comfortable cutting glass tile yourself, it is best to hire a professional.

## Types of Tile

1. **Cast Glass Tile:** a type of tile that is made by pouring molten glass into molds.
2. **Fused Glass Tile:** a type of tile that is made by layering two or more pieces of glass together and fusing them together in a kiln.
3. **Coated Glass Tile:** a type of tile that is made by applying a thin layer of colored or metallic coating to the back of a clear glass tile.
4. **Mirrored Glass Tile:** a type of glass tile that has a reflective surface.
5. **Metallic Glass Tile:** a type of glass tile that has a metallic coating on the surface.
6. **Art Tile:** typically made by hand using a variety of glassmaking techniques, such as fusing, casting, and slumping.

### 1. Cast Glass Tile



### 4. Mirrored Glass Tile



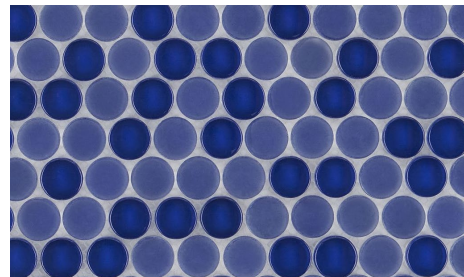
### 2. Fused Glass Tile



### 5. Metallic Glass Tile



### 3. Coated Glass Tile



### 6. Art Tile



**Most common glass-cutting complaints:**

- Chips in the glass
- The non-glass backing is rough and can be seen through the glass after install.
- Breaks while cutting

**Possible Solutions**

- Use a snap cutter (1)
- Try cutting the tile upside down.
- Cut slowly
- Use tape (2)

**The pictures below show results of cutting with a diamond blade**

**Chips in the backing** – this chip can be seen from the front.



**Edges are rough** – unless this tile is covered it cannot be used.

**(1) Tape Usage****(2) Snap cutter**

(1) Snap cutter

(2) Side Grinder

(3) 7" Wet Saw



## Conclusion

Cutting glass tiles is not as easy as cutting regular ceramic tiles. It's important to be patient and set the right expectations. You may need to try different cutting methods to find what works best. If you can use a snap cutter, you'll get the best results. But if you're making an L-shaped cut or the snap cutter won't work, here are a few things to keep in mind:

- Don't cut too fast.
- Don't use a dull blade.
- Always sand the edges of the tile after cutting.
- Wear safety glasses and gloves. Glass can be sharp and dangerous, so it's important to protect yourself.
- Score the tile with a glass cutter before you try to snap it. This will help to create a clean cut.
- Use a straight edge to guide the glass cutter. This will help to ensure that your cut is straight.
- If you're making a long cut, you may need to score the tile multiple times.
- If the tile doesn't snap cleanly, you may need to score it again or use a different cutting method.
- Once you've cut the tile, use a sanding block to smooth out the edges. This will help to prevent cuts and make the tile look more finished.

**Dressing Stone (sanding block)** – Use this for all tiles, especially glass. This will not only ease the sharp edges it will even out those chips.

**Don't be discouraged. Be patient and take your time.  
Cutting glass tiles takes practice.**